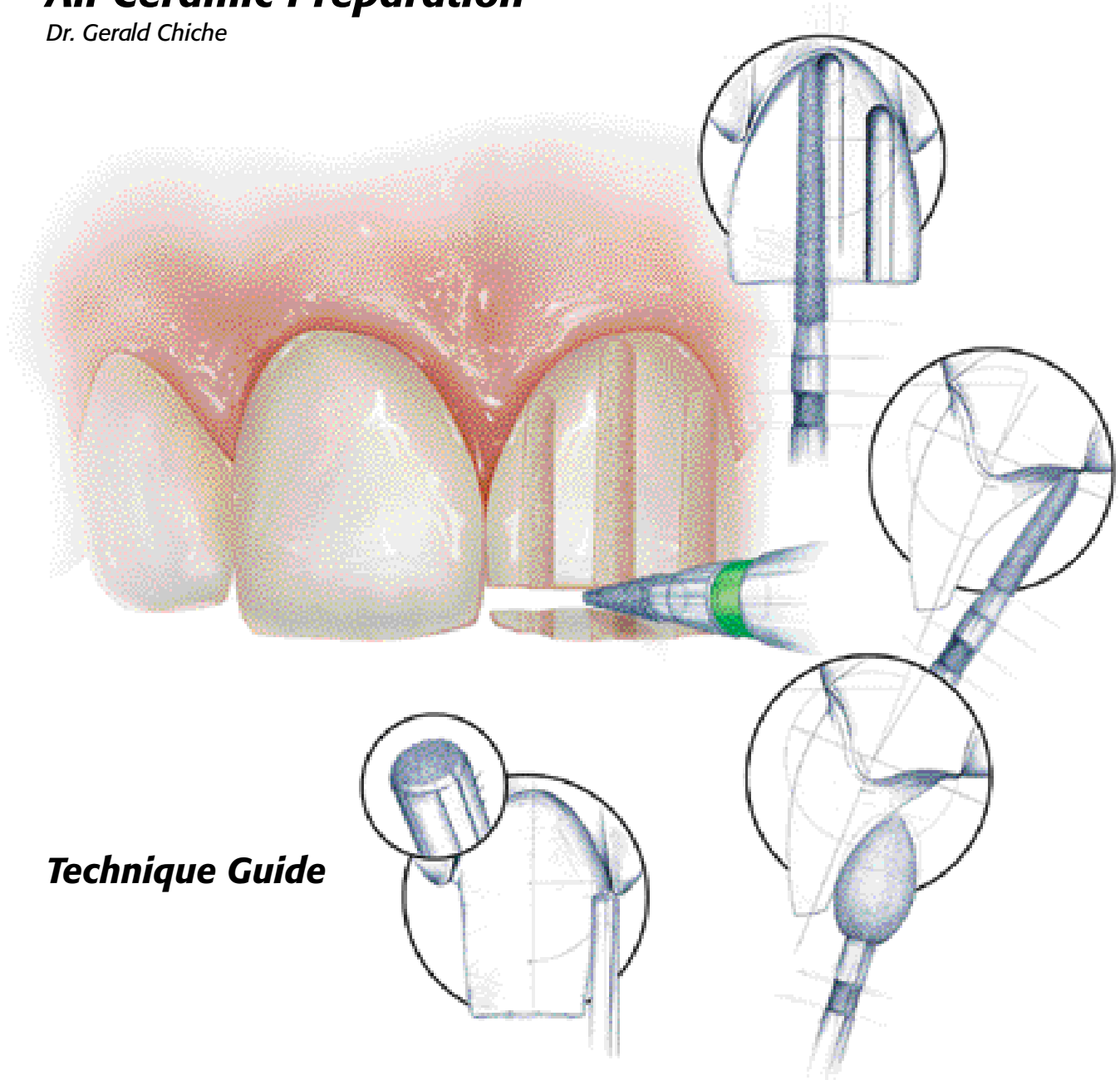


All Ceramic Preparation

Dr. Gerald Chiche



Technique Guide

Consistently. Rationally. Systematically.

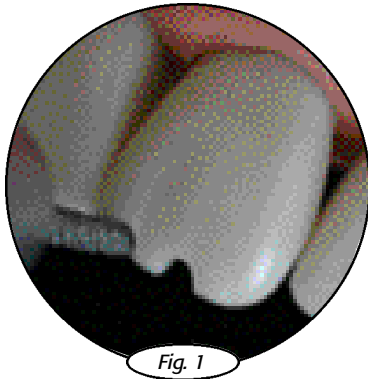
Buy Direct. Buy Brasseler USA.



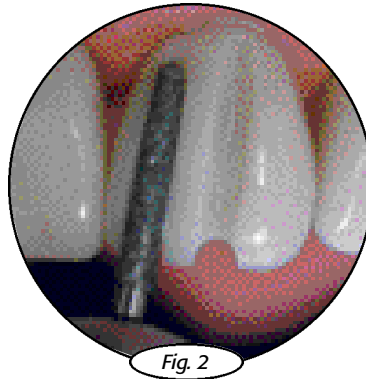
PFM - All Ceramic Preparation

The LSU-Chiche Kit, designed by Dr. Gerald Chiche, is a versatile and compact preparation kit for ceramic to metal and all ceramic anterior crown restorations. Consisting of just six diamonds and one carbide bur, this kit will assist the clinician in providing the optimum ceramic restoration.

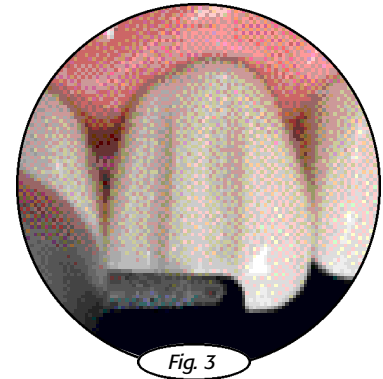
Technique sequence



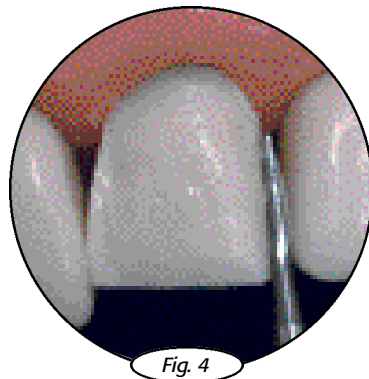
The 5850-016 or 5850-018 diamond burs are placed horizontally on the incisal edge of the tooth and depth cuts of 1-2mm are placed.



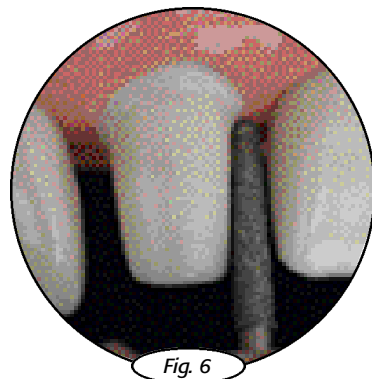
The 5850-016 or 5850-018 diamond burs are next used to create initial vertical depth grooves.



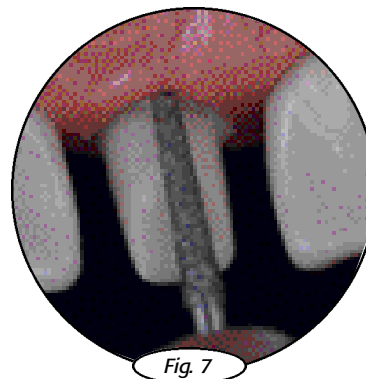
The 5850-016 or 5850-018 diamond burs feature a moderate taper and a round end. They are used to reduce the incisal edge and connect the facial depth cuts.



To avoid damage to adjacent teeth in single unit preparations the 699L carbide bur is ideal for slicing through proximal contacts.



The 5850-016 or 5850-018 diamond burs are used to develop the shoulder for anterior crown preparations. Depending on the desired extent of the shoulder; it may be confined to the facial surface of the tooth for a PFM crown, extended past the proximal contacts for PFM crown, or circumferential for an all ceramic crown.



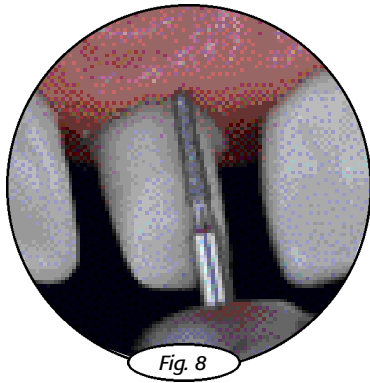


Fig. 8

The 876K-012 diamond bur is used to create a definitive chamfer finish line on the lingual tooth surface to accommodate the metal collar in this area.

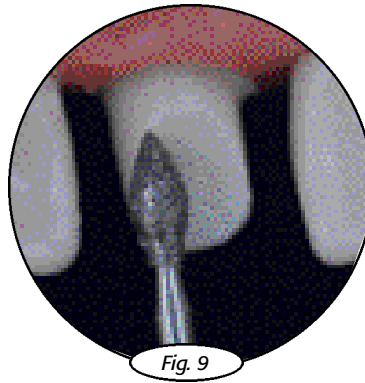


Fig. 9

The 5368-023 football-shaped diamond bur is designed to provide optimum clearance in the lingual concavity in centric occlusion, protrusive, and lateral excursions.

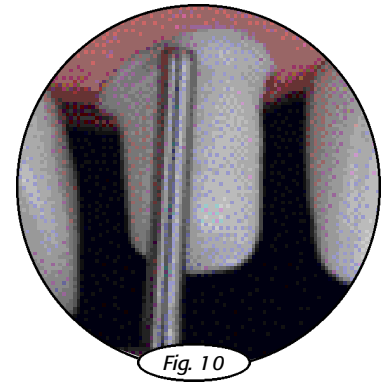
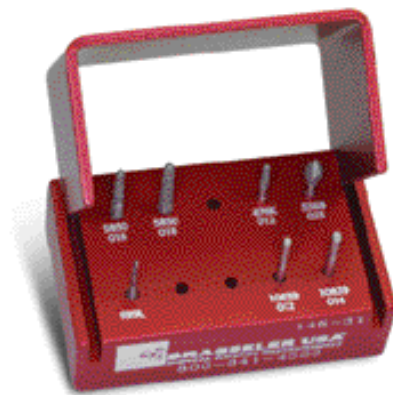


Fig. 10

The 10839-012 or 014 end-cutting bur with bevel side is used to finish the shoulder floor. This instrument eliminates undercuts and gingival lacerations without hand finishing.

- 1.4mm is used for 1.0-1.2mm wide shoulders
- 1.2mm is used for shoulders narrower than 1.0mm in width

LSU - Chiche PFM All Ceramic Preparation Kit



146.31



US No.					699L		
Order No.	5850	5850	876K	5368	H33L	10839	10839
Size	Ø 1/10 mm	016	018	012	023	009	012
L mm		10.0	10.0	5.0	5.0	5.2	-

LSU - Chiche PFM All Ceramic Preparation Kit

Developed by Dr. Gerald Chiche

Friction Grip 31 -
Ø1.60mm x 19mm L

System for preparation of all ceramic or porcelain-fused-to-metal crowns.

Brasseler USA

One Brasseler Blvd.
Savannah, GA 31419

Toll Free: 800.841.4522

Phone: 912.925.8525

Fax: 888.610.1937

Buy Direct. Buy Brasseler USA.

©2003 Brasseler USA

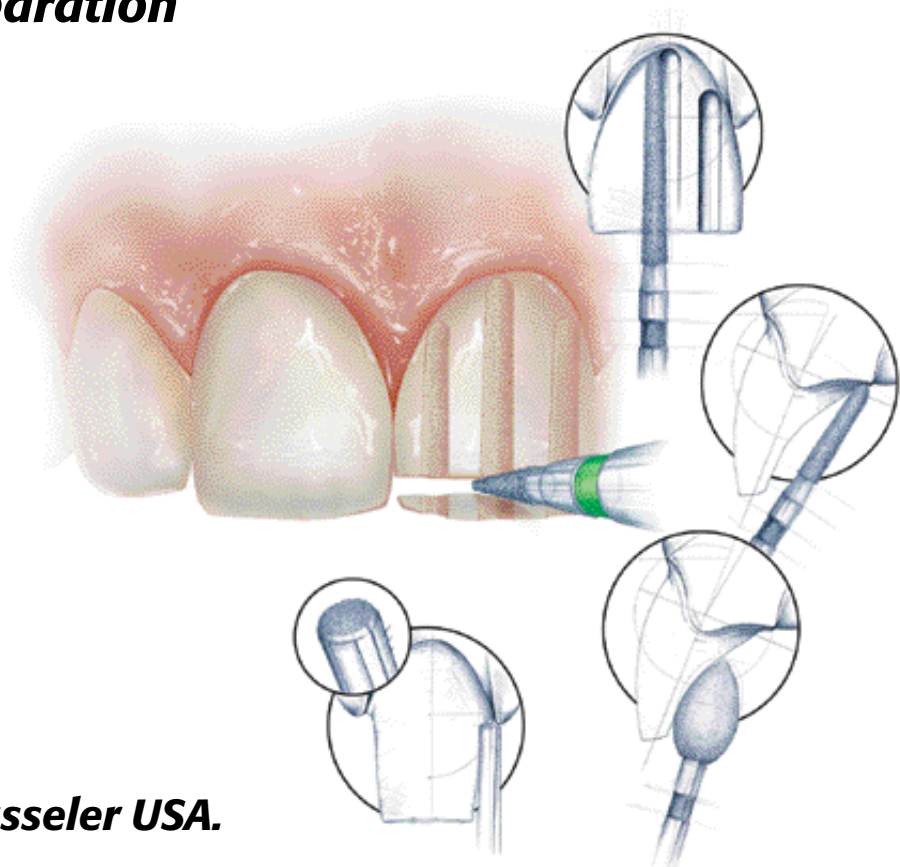


BRASSELER USA
DENTAL ROTARY INSTRUMENTS

B-1913-05.03-5M-KPC

All Ceramic Preparation

Dr. Gerald Chiche



Technique Guide

Buy Direct. Buy Brasseler USA.